

2.54 mm connectors  
**FER+RIZ+RADIONA**

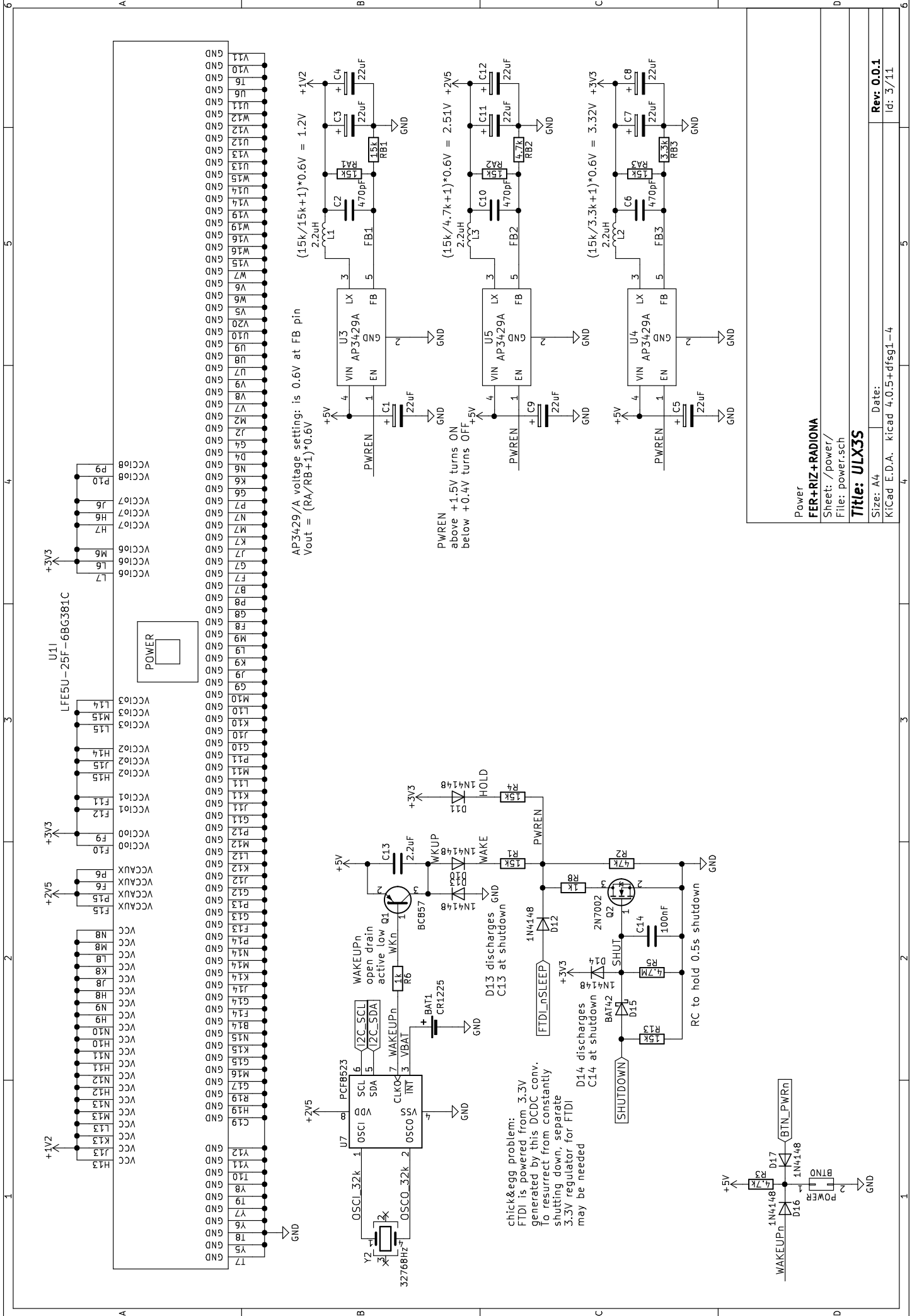
Sheet: /gpio/  
 File: gpio.sch

**Title: ULX3S**

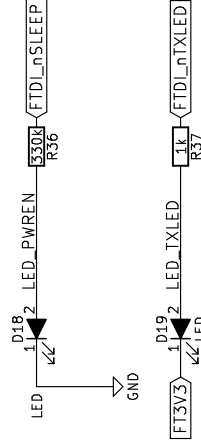
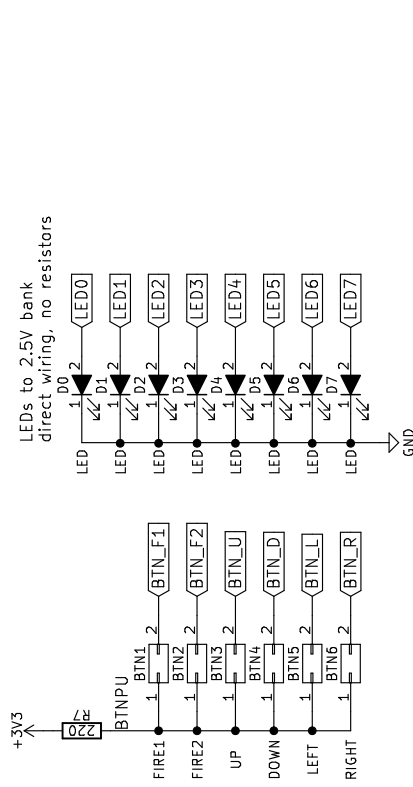
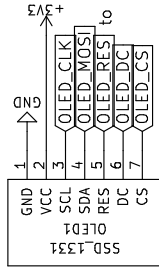
Size: A4 Date:  
 KiCad E.D.A. kicad 4.0.5+dfsg1-4

GPIO route only A/B pairs as those are differential, bidirectional  
 don't route C/D pairs to GPIO as those can be differential input only

**Rev:**  
 Id: 2/11



SSD1306 B/W or SSD1331 COLOR  
 compatible OLED 0.96" or 1.3" PCB  
 14x14 units  
 1 unit = 2.54 mm



Buttons, LEDs, OLED display  
**FER+RIZ+RADIONA**  
 Sheet: /blinky/  
 File: blinky.sch

**Title: ULX3S**

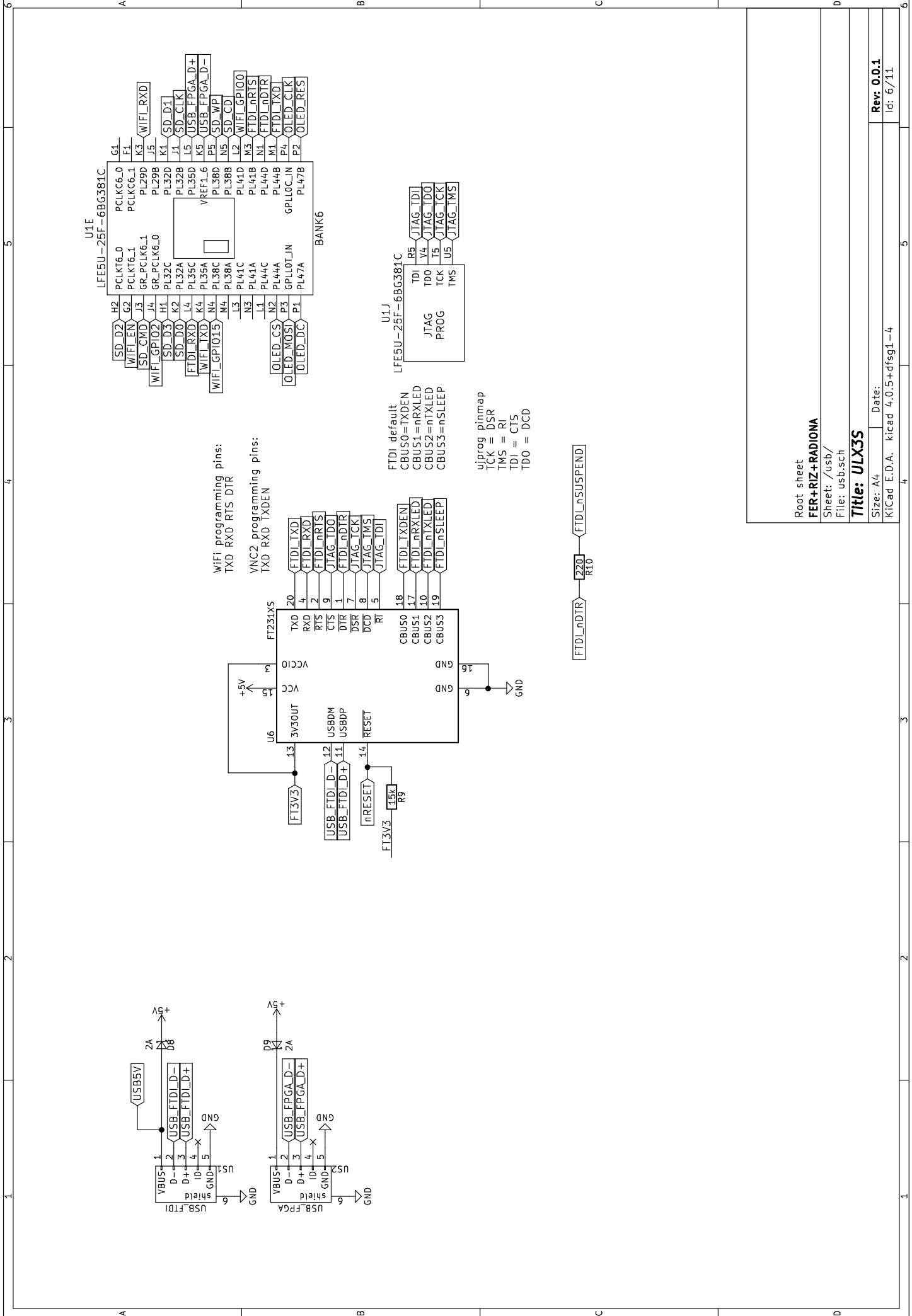
Size: A4 Date:

KiCad E.D.A. kicad 4.0.5+dfsg1-4

Rev: 0.0.1

Id: 4/11



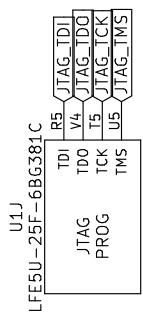
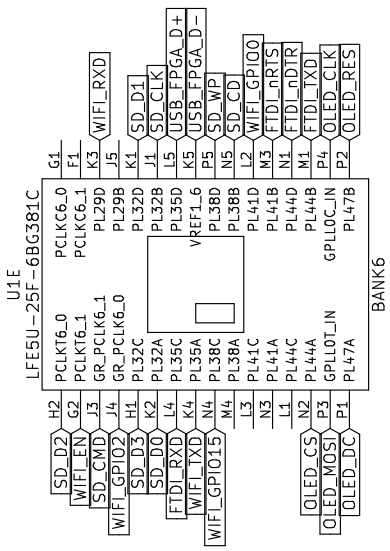


WiFi programming pins:  
TXD RXD RTS DIR

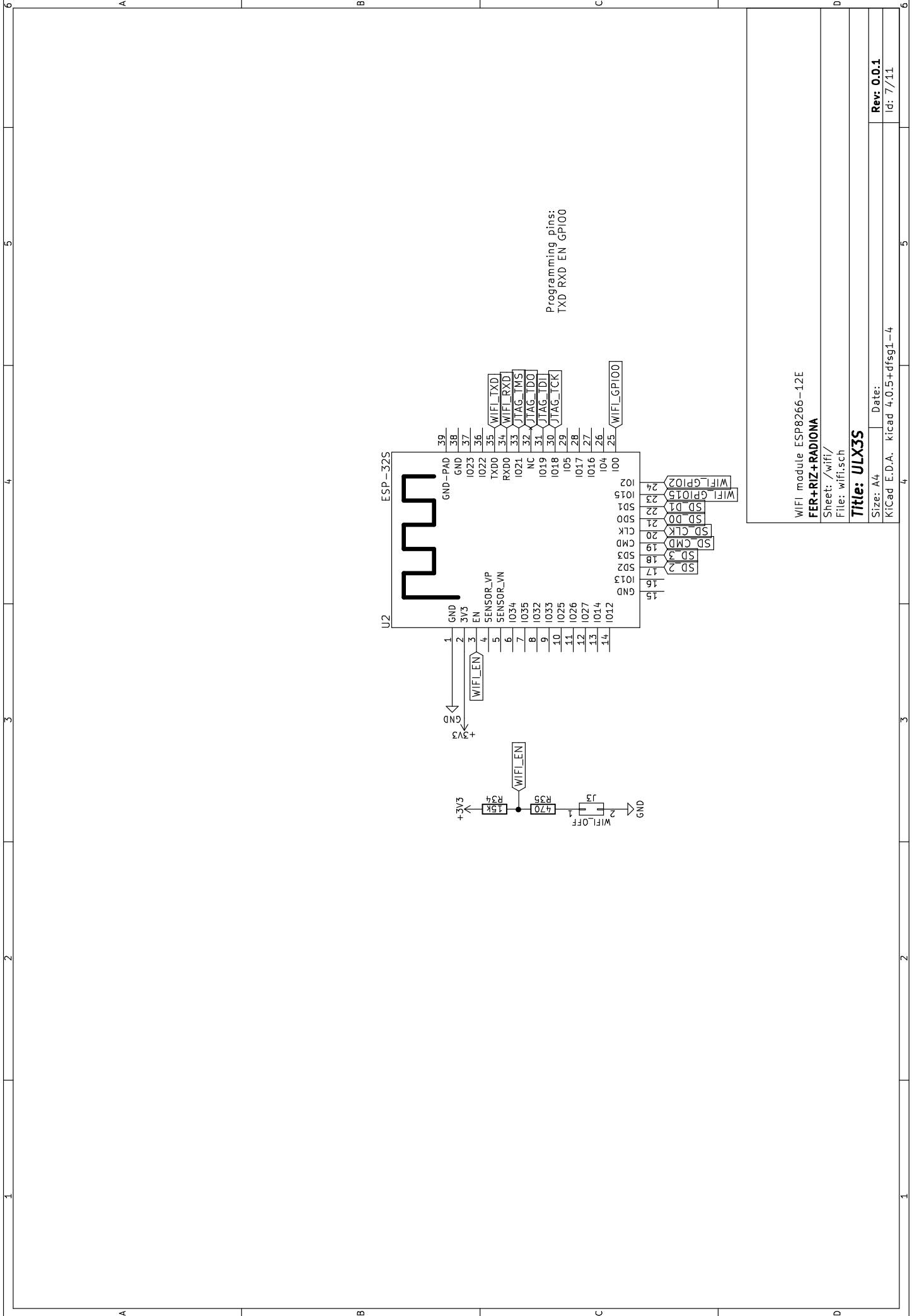
VNC2 programming pins:  
TXD RXD TXDEN

FTDI default  
CBUS0=TXDEN  
CBUS1=nRXLED  
CBUS2=nTXLED  
CBUS3=nSLEEP

ujprog pinmap  
TCK = DSR  
TMS = RT  
TDI = CTS  
TDO = DCD



Root sheet  
**FER+RIZ+RADIONA**  
Sheet: /usb/  
File: usb.sch  
**Title: ULX3S**  
Size: A4  
Date:  
KiCad E.D.A. kicad 4.0.5+dfsg1-4  
Rev: 0.0.1  
Id: 6/11



Programming pins:  
TXD RXD EN GPIO0

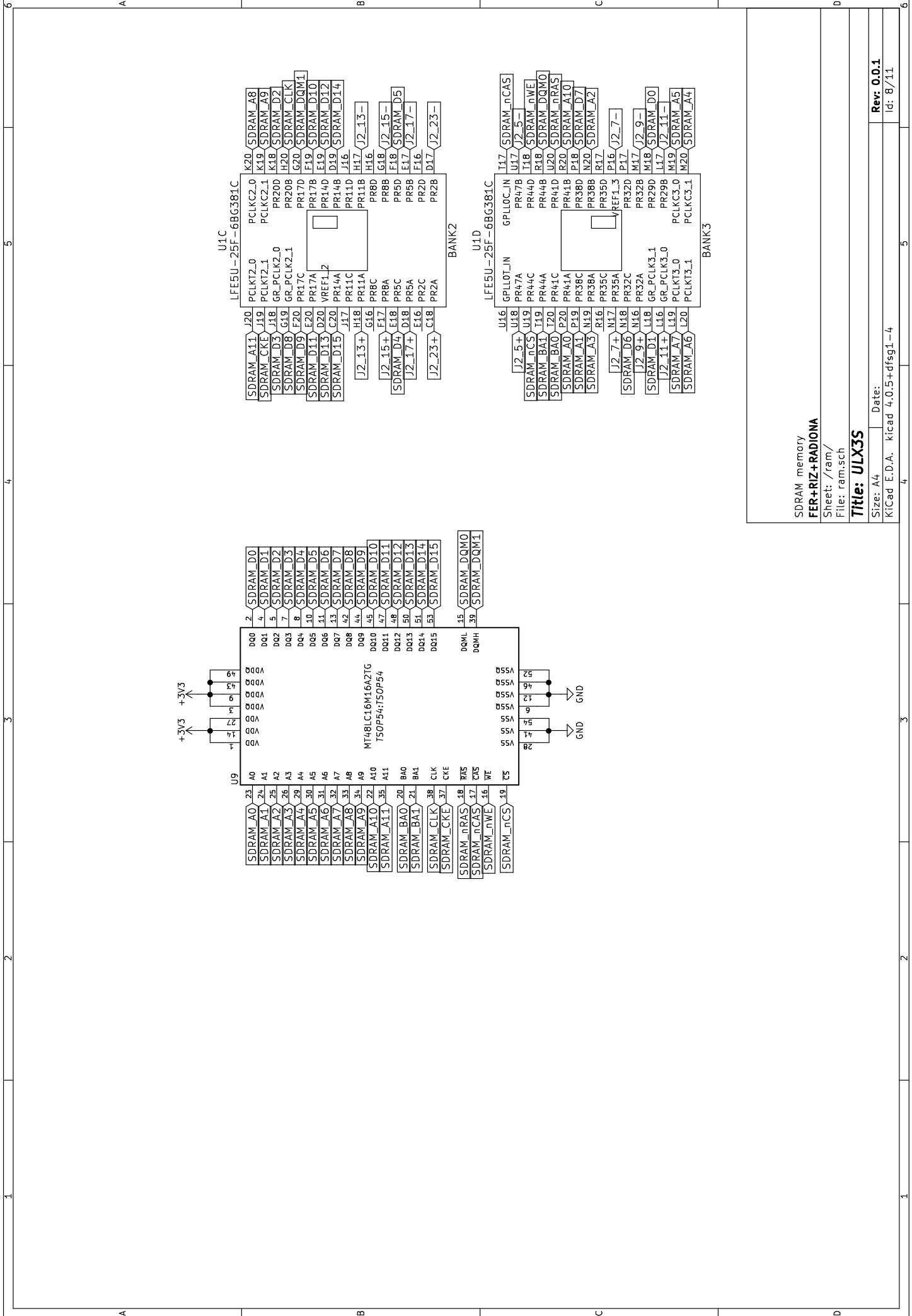
WIFI module ESP8266-12E  
**FER+RIZ+RADIONA**

Sheet: /wifi/  
File: wifi.sch

**Title: ULX3S**

Size: A4 Date:  
KiCad E.D.A. kicad 4.0.5+dfsg1-4

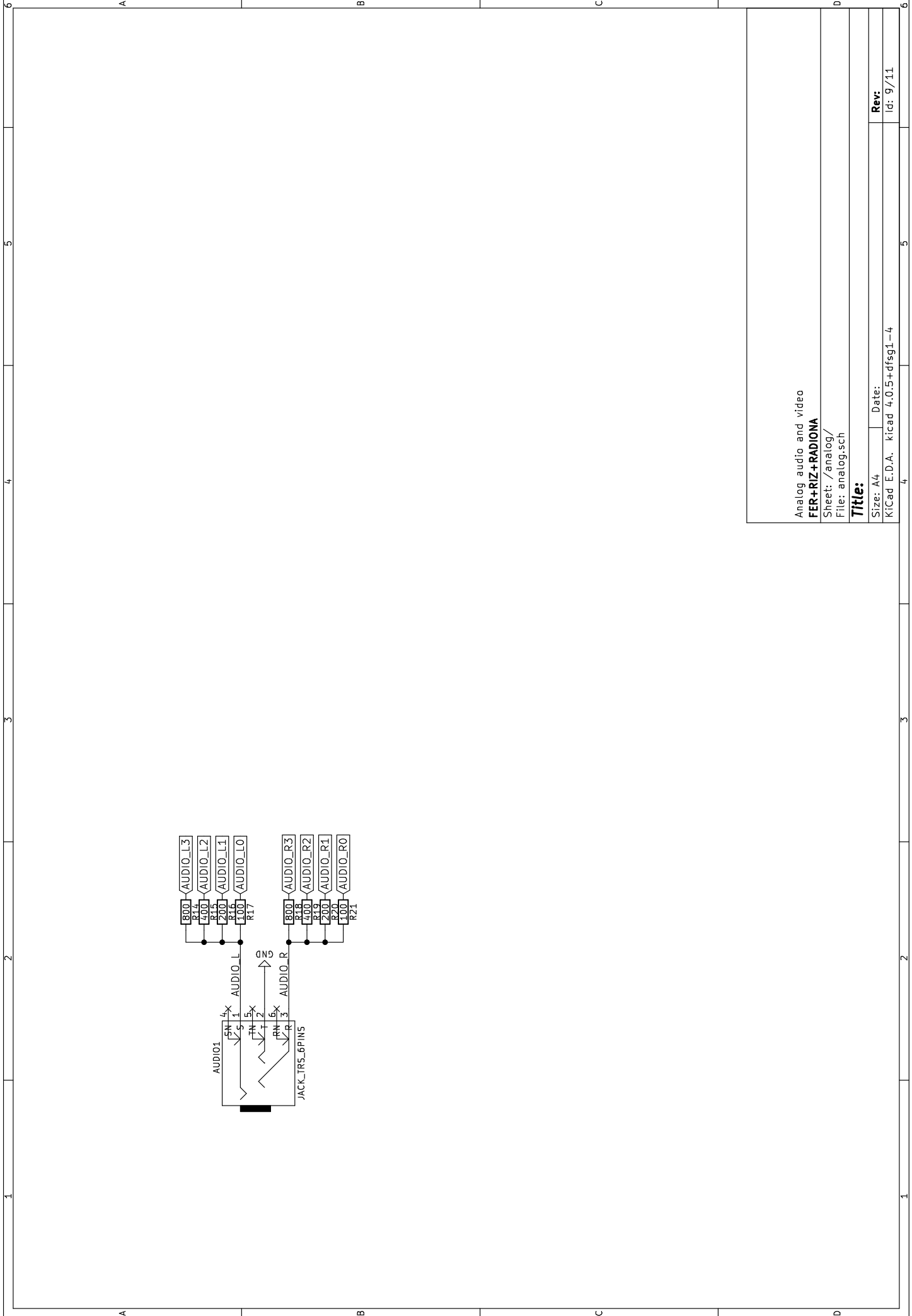
**Rev. 0.0.1**  
Id: 7/11



SDRAM memory  
**FER+RIZ+RADIONA**  
 Sheet: /ram/  
 File: ram.sch  
**Title: ULX3S**  
 Size: A4 Date:  
 KiCad E.D.A. kicad 4.0.5+dfsg1-4

Rev. 0.0.1  
 Id: B/11





Analog audio and video

**FER+RIZ+RADIONA**

Sheet: /analog/

File: analog.sch

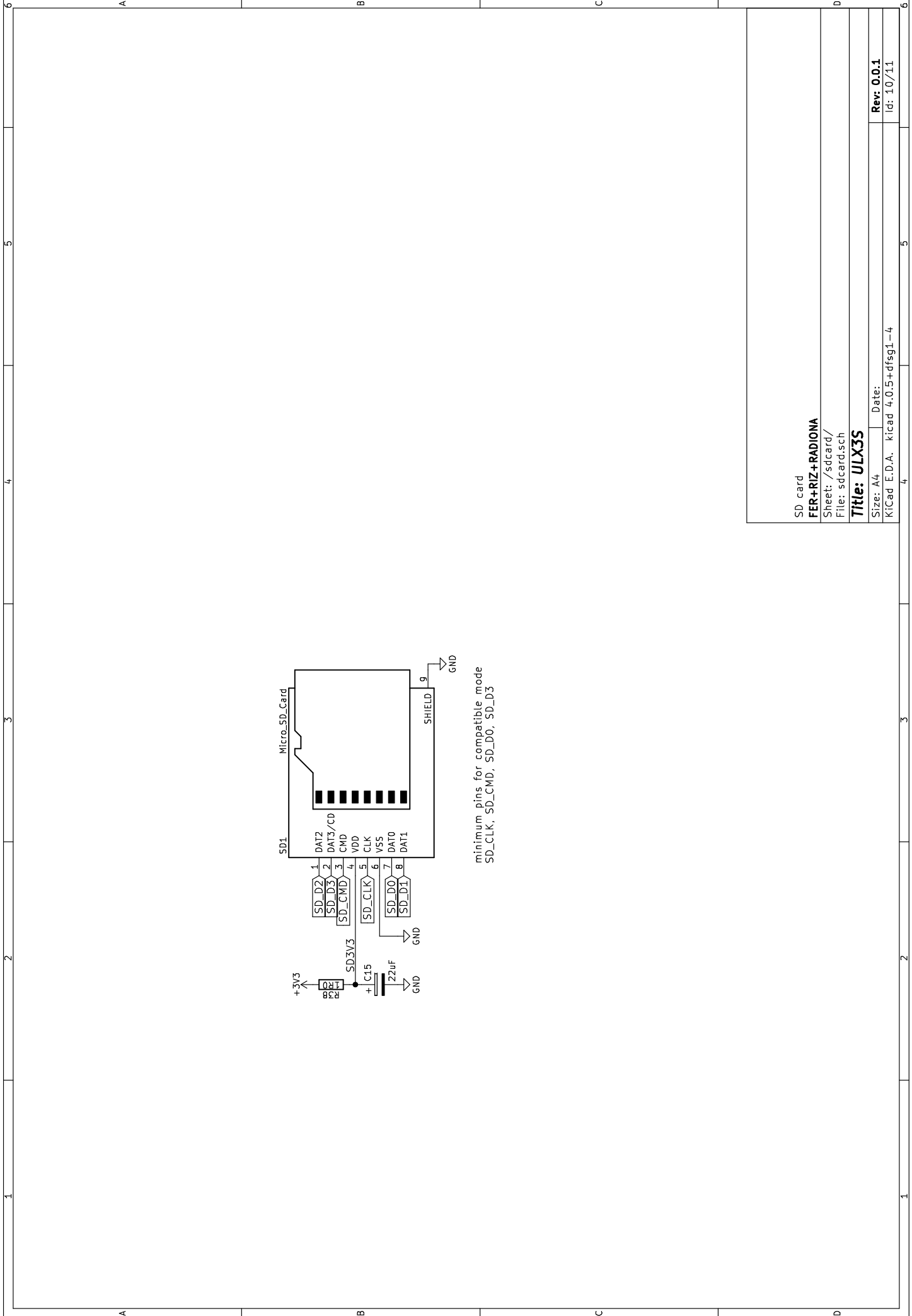
**Title:**

Size: A4 Date:

KiCad E.D.A. kicad 4.0.5+dfsg1-4

**Rev:**

Id: 9/11



SD card  
**FER+RIZ+RADIONA**

Sheet: /sdcard/  
 File: sdcard.sch

**Title: ULX3S**

Size: A4 Date:

KiCad E.D.A. kicad 4.0.5+dfsg1-4

Rev: 0.0.1

Id: 10/11

