

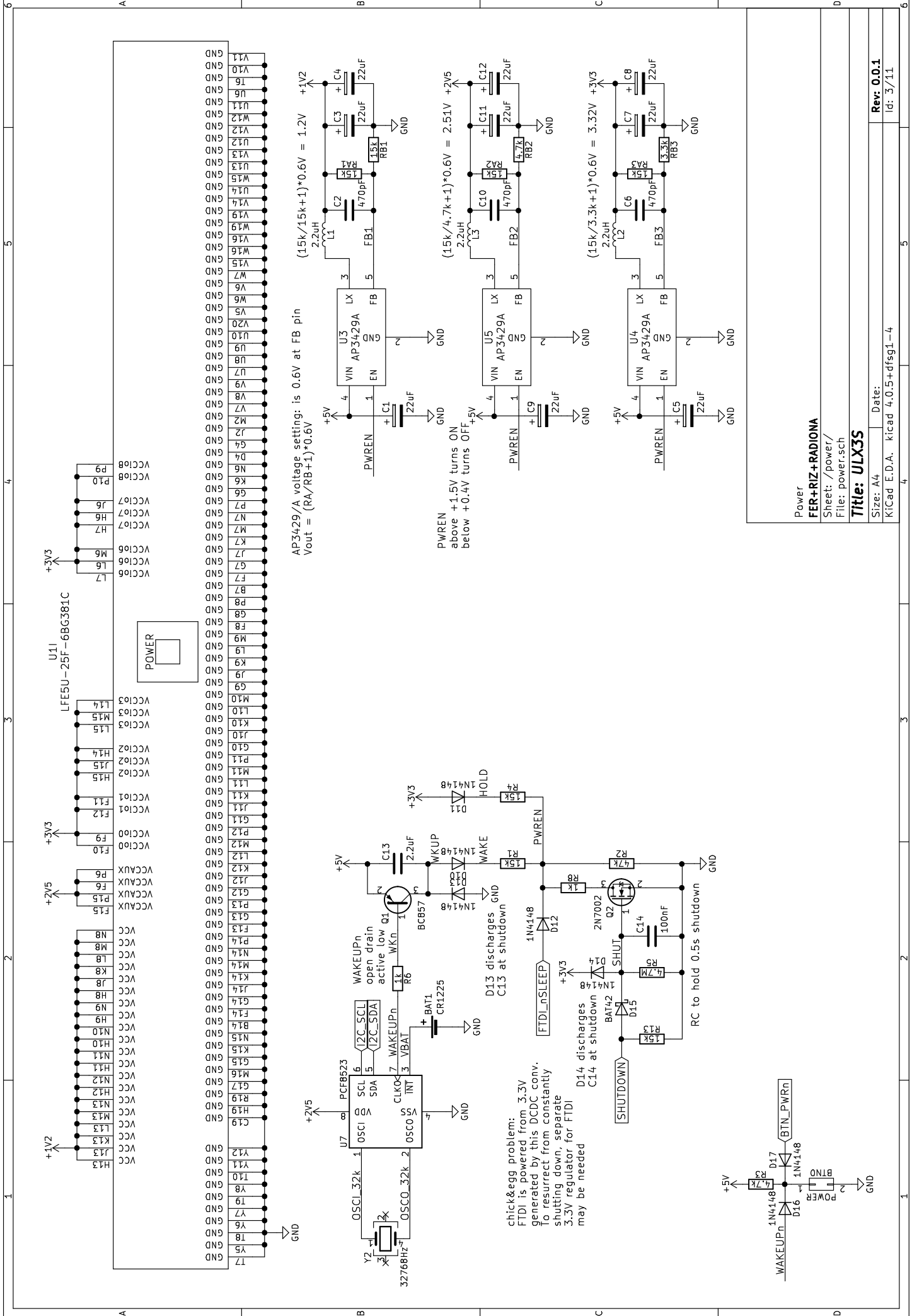
2.54 mm connectors  
**FER+RIZ+RADIONA**

Sheet: /gpio/  
 File: gpio.sch

**Title: ULX3S**

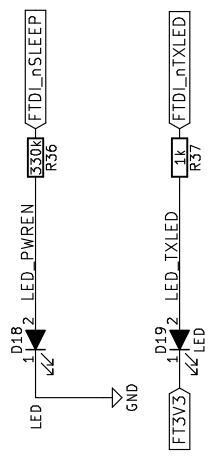
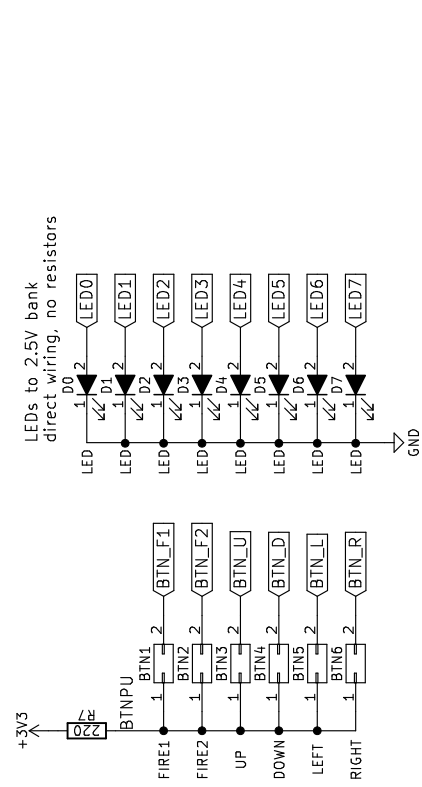
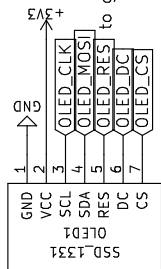
Size: A4 Date:  
 KiCad E.D.A. kicad 4.0.5+dfsg1-4

GPIO route only A/B pairs as those are differential, bidirectional  
 don't route C/D pairs to GPIO as those can be differential input only



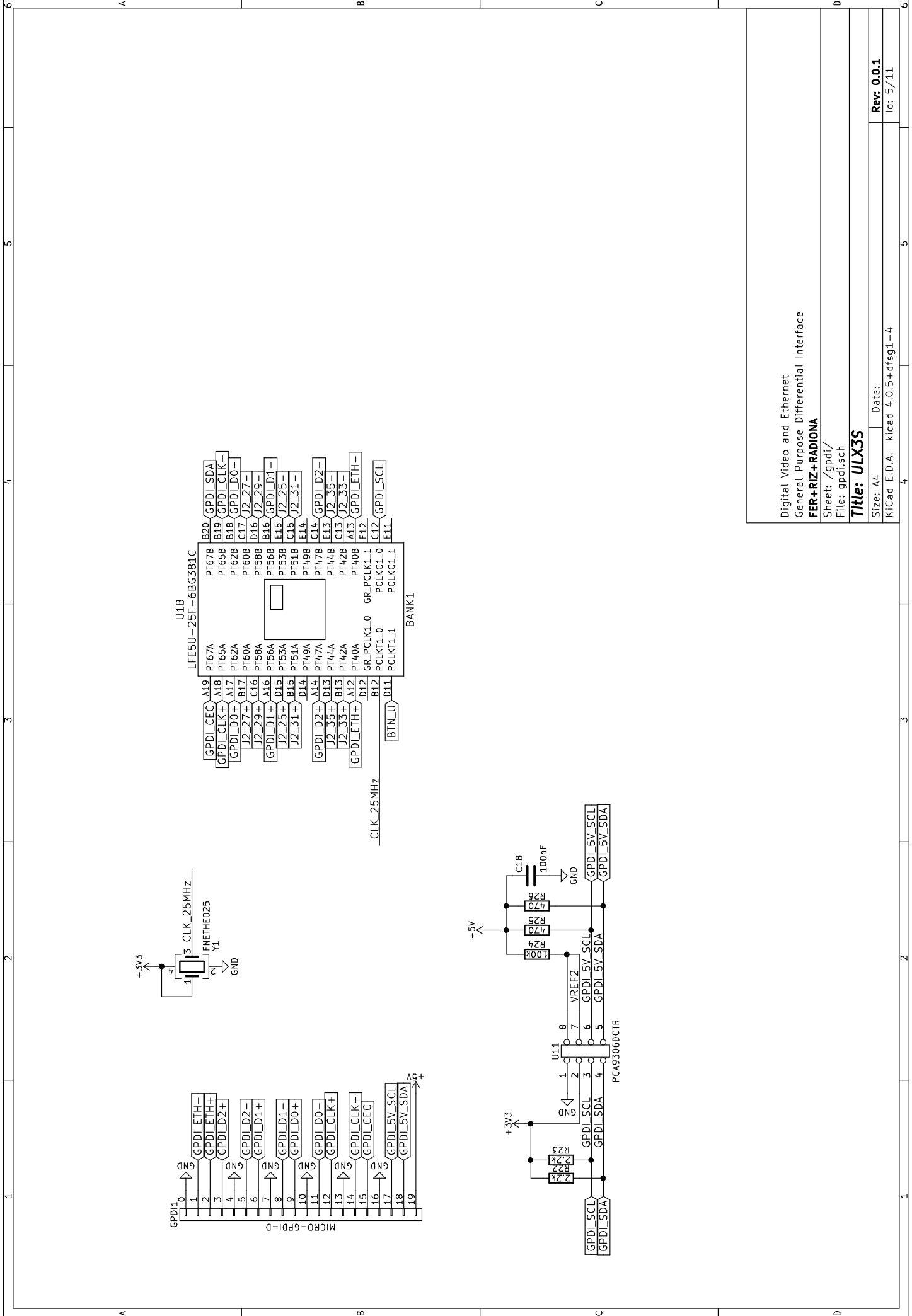
Power  
**FER+RIZ+RADIONA**  
 Sheet: /power/  
 File: power.sch  
**Title: ULX3S**  
 Size: A4 Date:  
 KiCad E.D.A. kicad 4.0.5+dfsg1-4 Id: 3/11

SSD1306 compatible OLED 1.3" PCB  
 14x14 units  
 1 unit = 2.54 mm



Buttons, LEDs, OLED display  
**FER+RIZ+RADIONA**  
 Sheet: /blinky/  
 File: blinky.sch  
**Title: ULX3S**

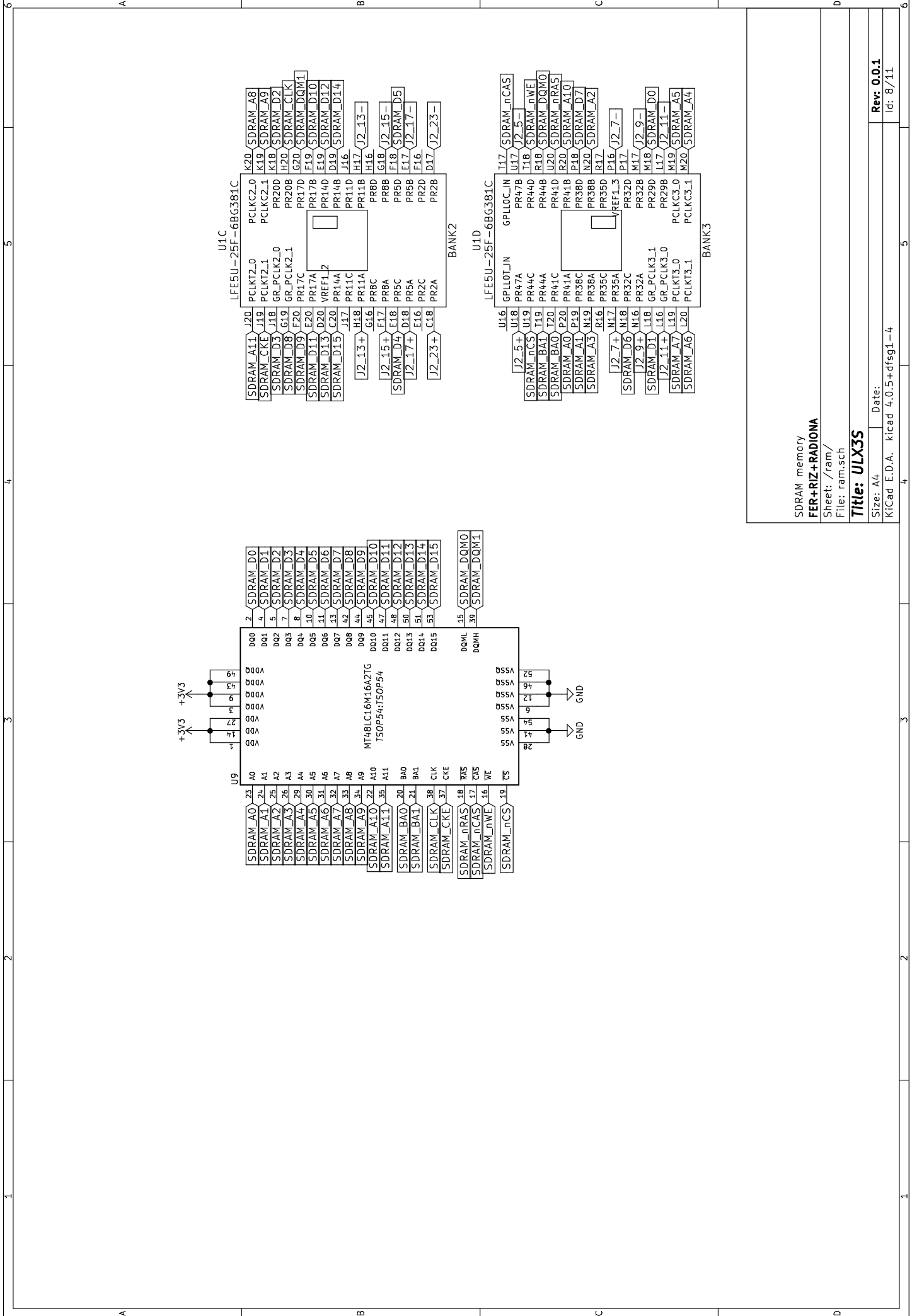
Size: A4 Date:  
 KiCad E.D.A. kicad 4.0.5+dfsg1-4  
**Rev: 0.0.1**  
 Id: 4/11



Digital Video and Ethernet  
 General Purpose Differential Interface  
**FER+RIZ+RADIONA**  
 Sheet: /gpd1/  
 File: gpd1.sch  
**Title: ULX3S**  
 Size: A4 | Date:  
 KiCad E.D.A. kicad 4.0.5+dfsg1-4







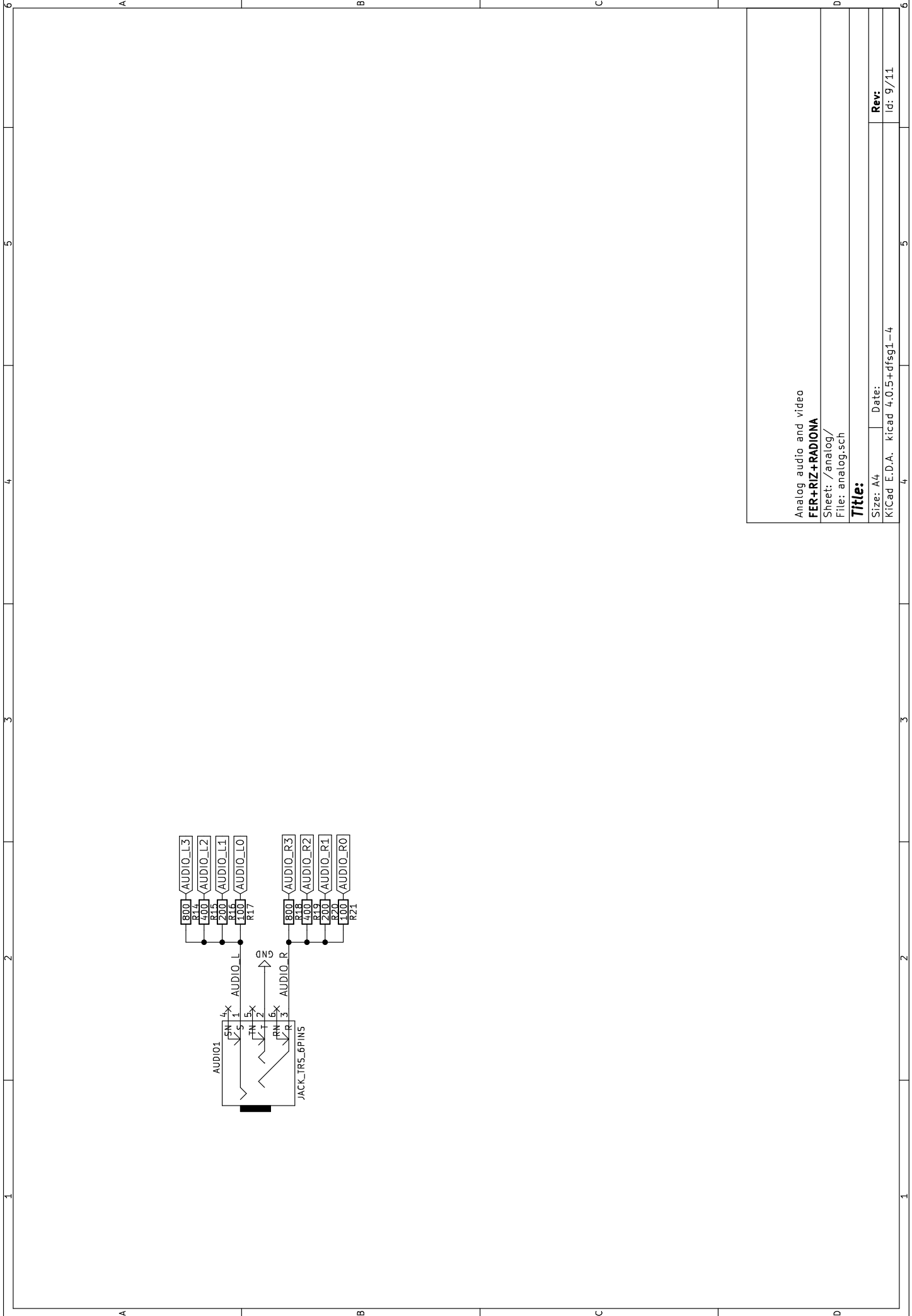
SDRAM memory  
**FER+RIZ+RADIONA**  
 Sheet: /ram/  
 File: ram.sch

**Title: ULX3S**

Size: A4 Date:  
 KiCad E.D.A. kicad 4.0.5+dfsg1-4

Rev. 0.0.1  
 Id: 8/11





Analog audio and video

**FER+RIZ+RADIONA**

Sheet: /analog/

File: analog.sch

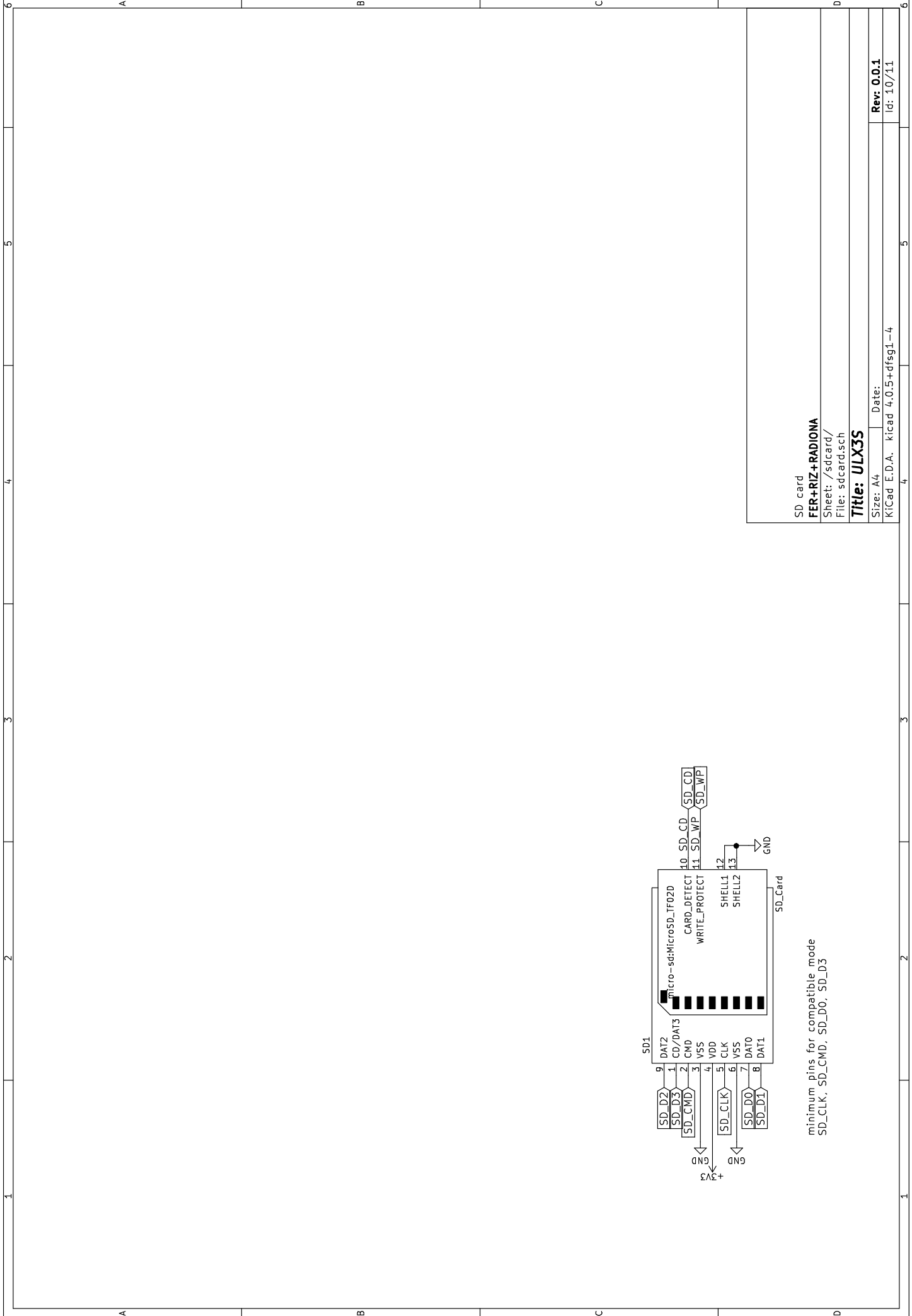
**Title:**

Size: A4 Date:

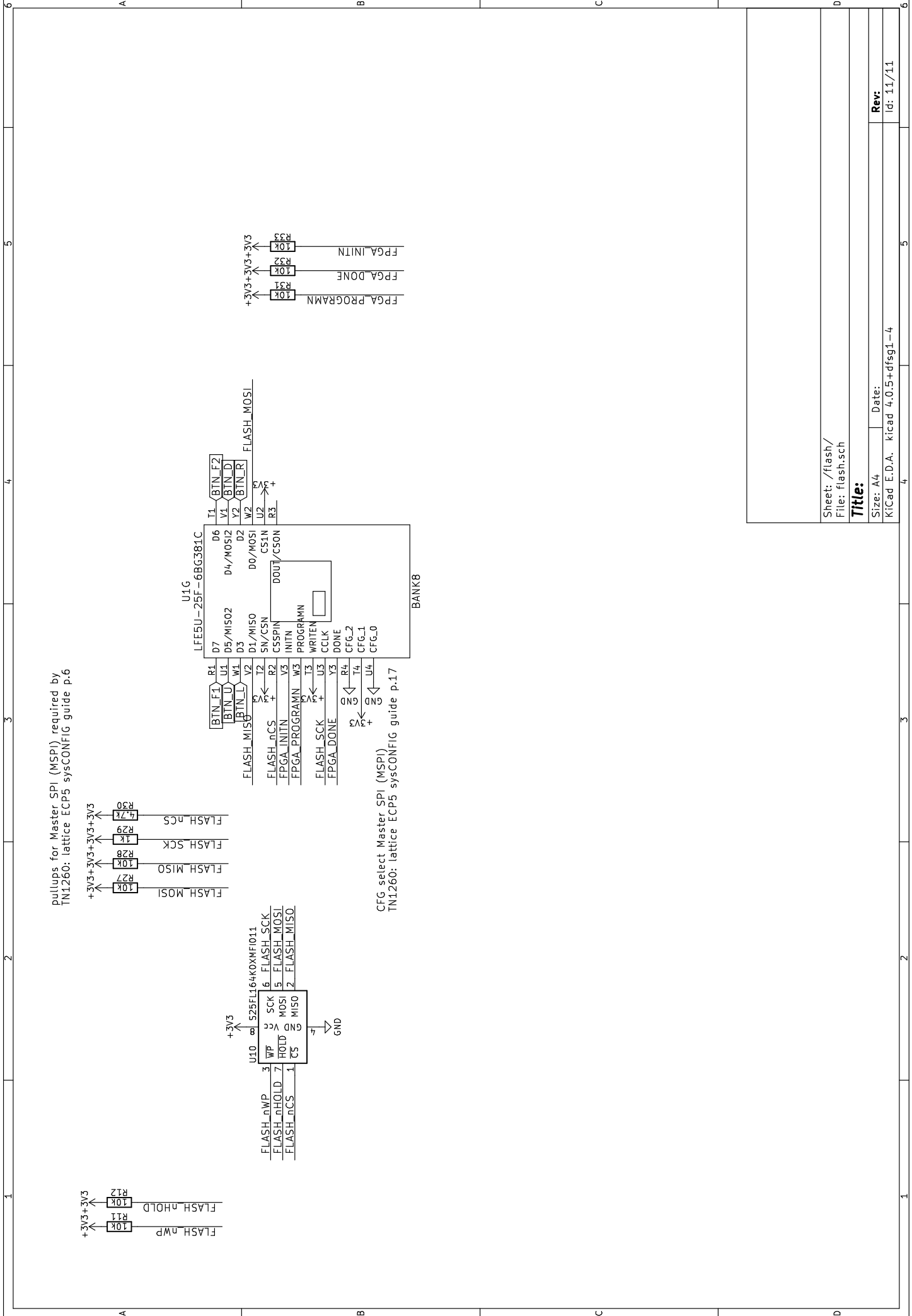
KiCad E.D.A. kicad 4.0.5+dfsg1-4

**Rev:**

Id: 9/11



SD card  
**FER+RIZ+RADIONA**  
 Sheet: /sdcard/  
 File: sdcard.sch  
**Title: ULX3S**  
 Size: A4 Date:  
 KiCad E.D.A. kicad 4.0.5+dfsg1-4  
**Rev: 0.0.1**  
 Id: 10/11



pullups for Master SPI (MSPI) required by TN1260: lattice ECP5 sysCONFIG guide p.6

CFG select Master SPI (MSPI)  
TN1260: lattice ECP5 sysCONFIG guide p.17

Sheet: /flash/  
File: flash.sch  
**Title:**  
Size: A4 Date:  
KICad E.D.A. kicad 4.0.5+dfsg1-4  
Id: 11/11